



**4024 Gallatin Street**  
Hyattsville, Maryland 20781

- 2,074 SQ/FT
- 4 BR
- 3.5 BA
- 2 CAR GARAGE
- 1,680 SQ/FT LOT

Directly adjacent to the vibrant Hyattsville Arts District, Suffrage Point delivers a traditional neighborhood ambiance in the heart of a thriving community. These new-construction luxury homes showcase Craftsman style details coupled with clean, elegant & modern amenities designed to complement the classic residential architecture found throughout this beautiful and historic Hyattsville community.

Suffrage Point is conveniently located within walking distance to Shops, Restaurants and the West Hyattsville Metro. This modern development also directly borders Thirty-Two beautiful acres of Scenic Public Parkland with access to Playgrounds, a Swimming Pool & Recreation Center with Restrooms, Walking and Biking Trails that connect to the Northwest Branch Trail, Picnic Pavilions, as well as a variety of sports & fitness facilities.

Priced from

**\$800,000**

Anticipated Availability Late 2021



Werrlein Properties  
Suffrage Point Development  
is proudly represented by;



**KELLER WILLIAMS.**  
FLAGSHIP of MARYLAND

For details on this listing, please contact  
Keller Williams Flagship Agent

**Lisa Burdyn, Realtor®, GRI**

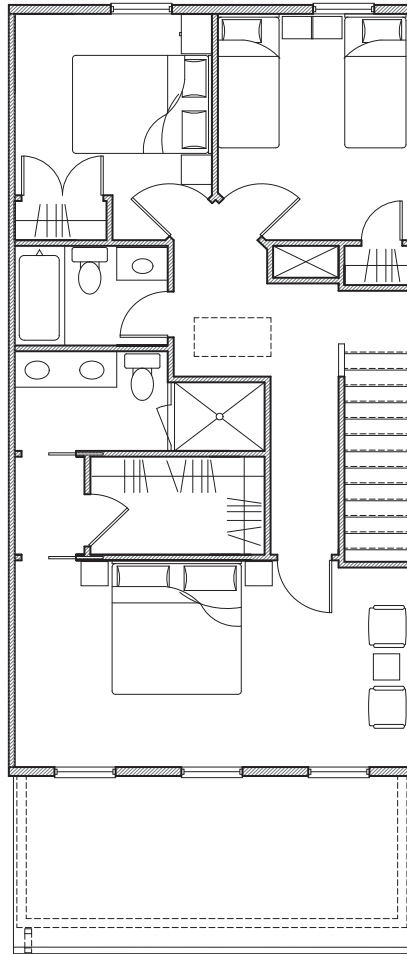
570-840-6913 | [Lisa@werrleinproperties.com](mailto:Lisa@werrleinproperties.com)



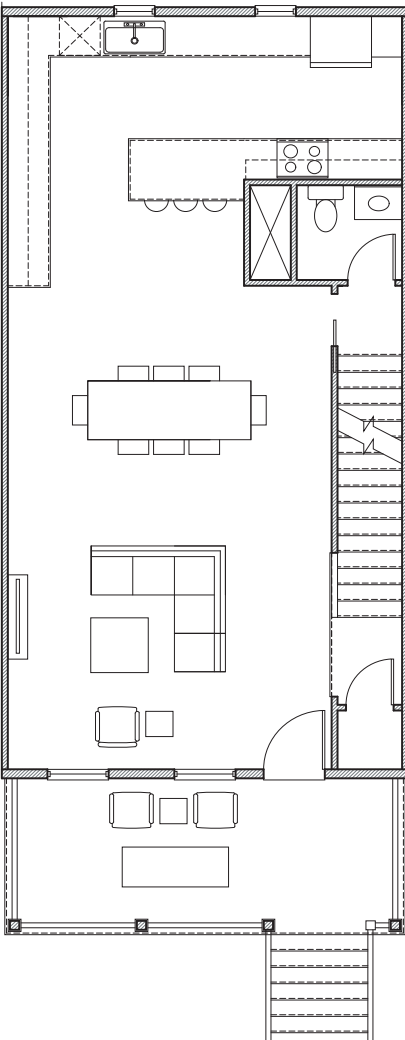
*"We like to think that our business isn't about transactions;  
It's more about relationships & partnerships!" - Jonathan Werrlein*

[www.werrleinproperties.com](http://www.werrleinproperties.com) • 570-840-6913  
522 Defense Highway • Annapolis, MD 21401

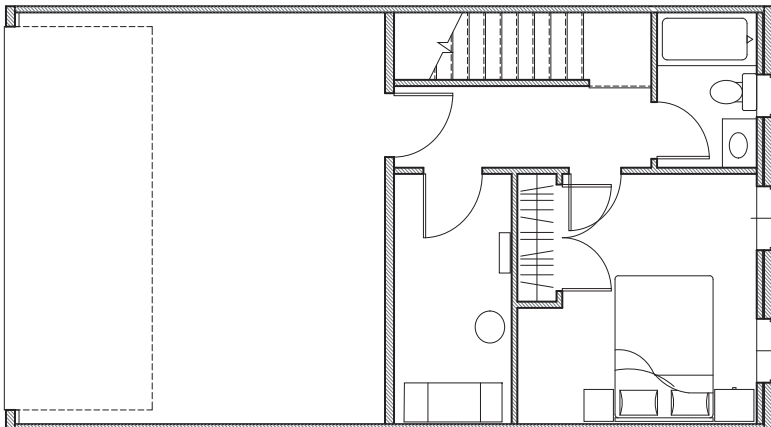
## UPPER FLOOR



## MAIN FLOOR



## LOWER FLOOR



## ROOM DIMENSIONS

<u>Upper Floor</u>	Primary Bedroom	10.5' x 21.3'
	Primary Ensuite	5.1' x 13.3'
	Primary Closet	5.0' x 9.5'
	Bedroom 2	9.2' x 10.8'
	Bedroom 3	11.5' x 10.3'
	Bathroom 3	5.1' x 9.5'
<u>Main Floor</u>	Living Room	14.0' x 17.9'
	Dining Room	14.0' x 17.9'
	Kitchen	13.8' x 21.3'
	Bathroom 2	4.5' x 6.0'
<u>Lower Floor</u>	Garage	18.9' x 21.3'
	Bedroom 4	10.0' x 13.8'
	Bathroom 4	5.1' x 7.3'
	Laundry/Utility	6.0' x 13.8'
<u>Exterior</u>	Front Porch	8.0' x 21.3'

*Note: All dimensions are estimated and are subject to change based on construction and field conditions.*

## SUMMARY

Total Interior Area 2,074 Sq/Ft

Total Bedrooms 4

Total Bathrooms 3.5

Ceiling Heights

+/- 8'-0" Lower Floor

+/- 10'-0" Main Floor

+/- 9'-0" Upper Floor

Lower Floor Laundry